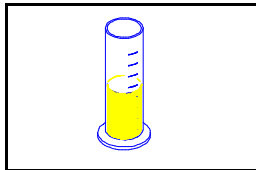
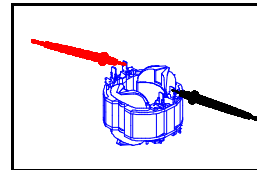


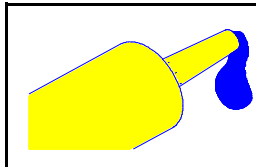
### 3. Technical data

**DD 350**


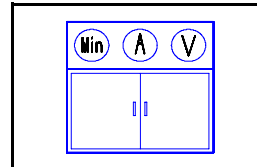
Pos	quantity [ml]
716	350 ± 20



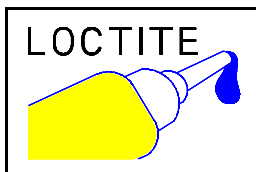
el. resistance [Ω]
1.07 ± 15%



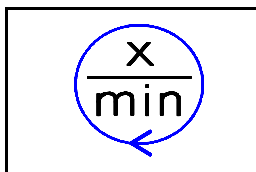
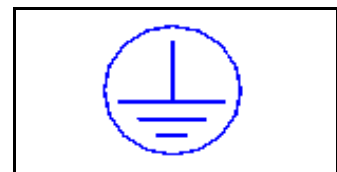
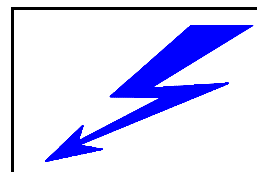
Pos	Pos. Service Drawing
810	25, 36, 69, 70, 71, 81, 92, 93, 96,
826	55, 58, 63, 75, 76,



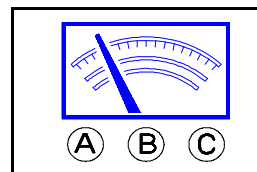
range[V]	current input[A]
100-120	± 10
220-240	± 5
burn-in periode [min]	5



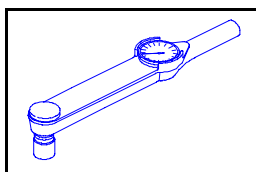
Pos	Pos. Service Drawing
901	41, 85, 89, 105, 114



r.p.m. [min <sup>-1</sup> ]			
Gear Sec.		Boost	
1	670	11	670
2	670	12	670
3	670	13	575
4	620	14	525
5	575	15	480
6	525	16	430
7	430	17	360
8	385	18	325
9	335	19	285
10	312	20	275
<b>New hole-starting Mode Funktion</b>		21	20



Part	Test pressure [Air]
Gear	2 bar
Water unit	6 bar
Test periode [min]	1



Pos	torque [Nm]
1	5 - 6
4	2.5 - 3
9	0.5 - 0.8
11	5 - 6
12	2 - 2.5
30	8 - 10
33	8 - 10
41	0.5 - 0.6
60	91 - 97
65	0.8 - 1.5
67	26 - 30
105	40 - 50