

Reception inspection of frost damaged DD 300/500

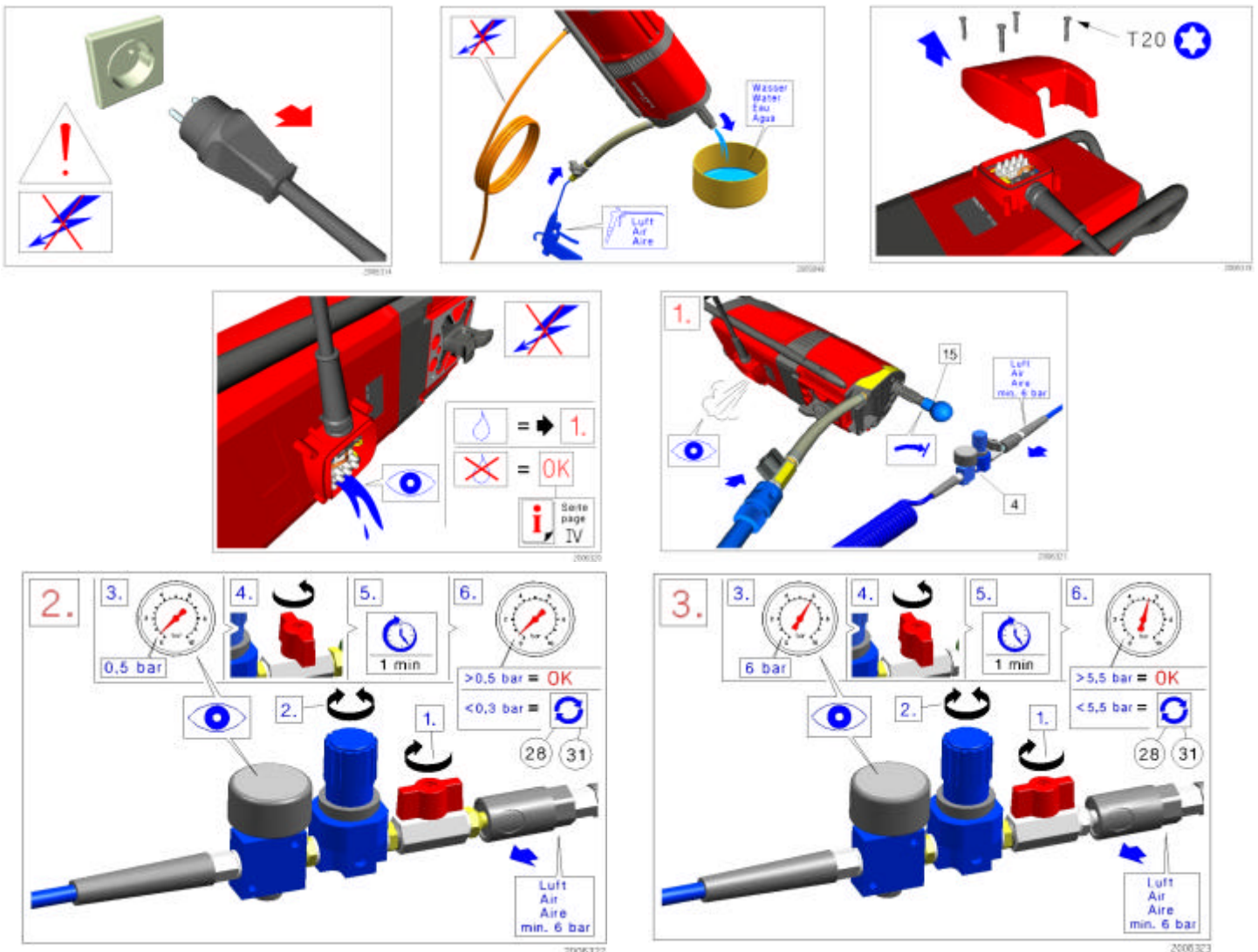
To prevent any additional repairs caused by frost damages during the cold season on the water-cooled motors of DD 300 and DD 500, observe following procedure each time when the tool comes for repair during the cold season:

- ? Open the housing end cap (Cable inlet)
- ? Empty the water out of the tool (Water supply)
- ? Control if there is water coming out the housing
- ? Do a pressure test (first with 0.5 bar, second with 6 bar)
- ? Control during the test, if there is water coming out the housing

If water is coming out the housing, open up the housing and control the electronic cooling plate and the seal between electronic and Motor.

When no water is coming out the housing, continue and make a data read out.

Be informed to the current status of repar information you will get in the RI



To inform our customer and so to avoid any damages during the cold season on the water-cooled motors of DD 300 and DD 500, some basic precautions need to be taken by the customer during the cold season to get the maximum on performance from the tool over its entire lifetime.

Enclose customer information flyers from Marketing or RI file 13 (Customer Information)

Also observe the indications on the information labels (see overleaf).

